

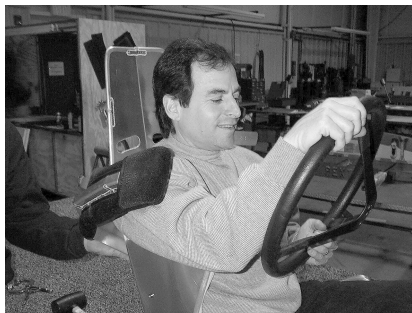


Measure at top back to obtain the angle of your seat as it is in your normal mounted position. We want to stay with the angle that you are comfortable with. You also need to measure the distance from your chest to the center of your steering wheel.

With these angles and measurements it will be easy to simulate your driving position on a table top. This will make access much easier for your helper to locate your system as you sit in your seat.

Locating Headrest:

Set your headrest on the back of your highback seat. Move the headrest up or down until the right side of the headrest is just under the tip of your nose. This can be verified by use of a straight edge (Picture 1). Your headrest with ¼" body washers (Picture 2).



Picture 1



Picture 2

Locating Shoulder Supports:

With your seat at proper mounted angles, place your steering wheel at the proper distance and angle from your chest. To mount the right shoulder, hold the wheel as you always do and turn to the left. This will make your right elbow move up. In this position your helper will place the shoulder support at the top of your arm just on your shoulder on the same angle as your arm. Once you are comfortable with this positioning, your helper can mark on the back of the seat where the shoulder support will be mounted (Pictures 3-5). Remember to have foam and upholstery on your shoulder support and to mount the support as tight as possible. Simulate turning right and left to make sure you have total movement.

Mounting of your Stealth Head System



Picture 3



Picture 4



Picture 5



Picture 6

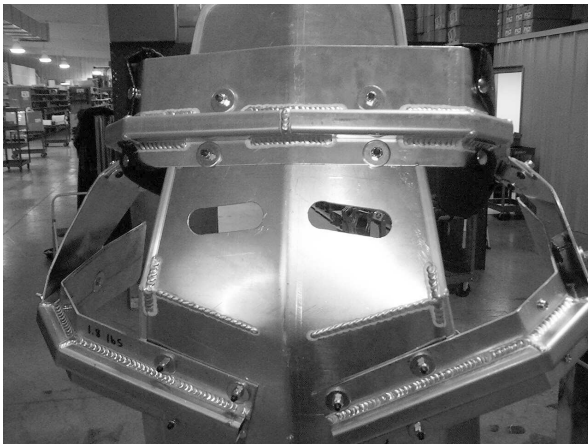
Repeat this same process for mounting the left shoulder support. Remember to simulate turning to the right to mount the left supports.

Now that all the parts of your system have been properly located, we can mount them.

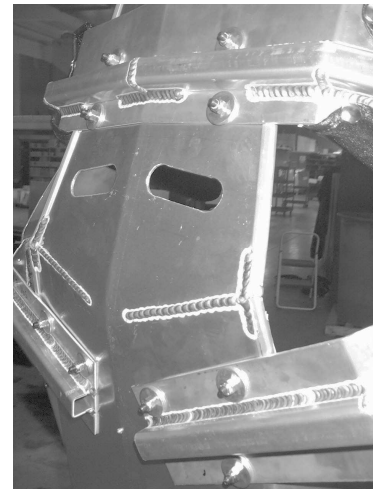
Grade 5 or 8, 1/4", #20 bolts are sufficient and the use of heavy 1/4" fender washer is a must.

The Head Support:

Four bolts required (Picture 7). Clamp your head support at your determined location. Using your 1/4" fender washer, place them as close to the main support structure and as wide as your highback seat will permit. Transfer the center hole of the washer for location of bolt. By using washers to locate your holes it will assure good flat contact of washer face as close to structure as possible for maximum strength. Drill holes and assemble. Make sure you use body washers on both sides of your bole (head and nut).



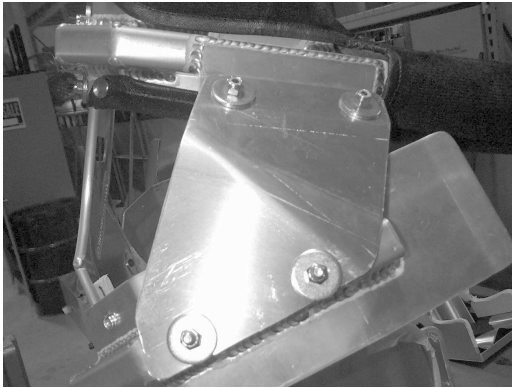
Picture 7



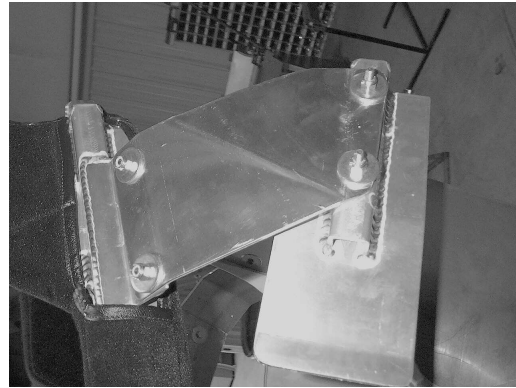
Picture 8

Four bolts required (Picture 8). Clamp your shoulder support to the seat in the determined location. Using your washers to transfer bolt holes as before, place two holes as far from the center of the seat as possible while still maintaining flat surface contact and as close as possible to the support structure. These are the two main load bearing fasteners. Two bolts toward the center of the seat will be sufficient. Repeat process for opposite side.

Now remove your shoulder cover and foam. With the two aluminum plates provided the headrest support must be tied to the shoulder supports. This is crucial to ensure that both supports are working together to keep your spine in line. This is very important to the mechanics of your stealth system. A flange is provided on each side of your head support. Bend and conform the plate to lie on the shoulder strut as flat as possible. Clamp and mark to remove all excess material. Round off all corners and de-bur all edges. Re-clamp and, using your body washers, locate the center of your holes to be drilled. On the shoulder strut, center the strut and drill all the way through the support. 1-3/4" long, 1/4" #20 button head bolts are suggest in the shoulder support. Make sure you use body washers on each side of the bolts. After all four bolts are installed and the plate is tight on both sides, you need to glue your shoulder foam to the support. 3M Super 77 spray adhesive can be found at Lowe's or Home Depot. (Pictures 9-10)



Picture 9



Picture 10

You may need to remove your head support from the seat to re-install the seat into your race car. Mount seat and install your Stealth head System once everything is mounted tight and secure. It is crucial to mount the back of your seat/headrest to your roll bar. We want the head support to bend out on impact. This will not happen if the head of the seat is allowed to twist. This is why it must be tied into the roll bars. Tabs or gussets from the head mount bolts for both right and left sides of headrest are a must.